

A satellite is positioned in the upper right corner of the frame, emitting a bright, narrow beam of light that extends diagonally down to the horizon of the Earth. The Earth's horizon is a glowing blue arc that spans across the lower half of the image. The background is a deep, dark black space.

*Beyond limits*

**SAB**

Satellite

Dishes  
Installation Materials  
Accessories





Factory / Turkey



Sales Office / The Netherlands



SAB Satellite was founded in The Netherlands in 2001 and has since grown to a very successful European company.

SAB has a wide range of products like satellite receivers, dishes, Inbs and steel products. All satellite receivers are under our own protected "SAB" brand with a 2 year warranty. We are well known for our excellent technical support. We provide support in Dutch, English, Turkish, German, and Russian.

To answer our clients requirements efficiently we have a modern factory based in Konya, Republic of Turkey of 12.000m<sup>2</sup> with a 7.000m<sup>2</sup> production area.

Our factory has modern machineries and robots for production of different steel and aluminium products. We have our own electro galvanizing facility which is full-automatic and environmentally friendly.

There is capacity for production of more than 150.000 dishes per month. Our dishes are zinc phosphated and have electrostatic powder coating which offers superior protection.

Quality is our main priority. All production is (re)checked carefully by a quality controller.

Satellite is our core business but production is not limited to this area. We can produce steel and aluminium products for other branches and markets as well.

SAB dishes are one of the best quality dishes in Europe. We produce many type of dishes and wall brackets. Should a product not be in our assortment, it would be possible to produce new products on request. OEM and ODM designs are also possibilities. Our factory has its own moulding-facility with every required machineries and professional crew.

We have multiple distributors in more than 35 countries worldwide.





- **Easy mounting**  
**by click system & one tool,**
- **High signal gain performance,**
- **Installers choice in Europe.**

M120  
**new**



SAB Dishes have a click system which avoids extra screws and nuts that assists the installer by reducing mounting time.



SAB dishes are mounted by only one tool,  
**easiest mounted dish in the world !**



SAB dishes are also offered in mesh option. SAB mesh dishes lasts longer years against strong wind and rain.

3

# S60

SAB S60 DISH  
Steel mount





| SPECIFICATIONS          | REFLECTOR  |
|-------------------------|--|
| Type                    | : Offset   |
| Offset Angle            | : 26°  |
| Reception Frequency     | : 10.70 - 12.75 GHz  |
| Antenna Gain (Ku-Band)  | : 35 dB - 37dB   |
| Material                | : Tri-cation Zinc Phosphated Steel / Aluminum                      |
| Finish Coat             | : Polyester Powder Coating   |
| Color                   | : Light Gray (RAL 7035)<br>Anthracite (RAL 7016)<br>Red (RAL 8012) |
| Small Axis Diameter     | : 52 cm  |
| Long Axis Diameter      | : 58 cm  |
| Thickness               | : 0.6 mm   |
| LNB Holder              | : 40 / 60 mm   |
| F/D                     | : 0.62   |
| Operational Temperature | : -40° + 60°   |
| Operation Wind          | : 90 km/H  |
| Survial Wind            | : 150 km/H   |
| Weight (average)        | : 1,38 kg  |

| SPECIFICATIONS                  | MOUNT  |
|---------------------------------|--|
| Type                            | : Trs 6065   |
| Material                        | : Galvanized Steel   |
| Finish Coat (Optional)          | : Polyester Powder Coating   |
| Color                           | : Light Gray (RAL 7035)<br>Anthracite (RAL 7016)<br>Red (RAL 8012) |
| Azimuth Alignment               | : 0° - 360°  |
| Elevation Alignment             | : 0° - 90°   |
| Weight (complete accessory box) | : 1,45 kg  |



|                              |          |
|------------------------------|----------|
| Pallet Quantity (Semi-Bulk): | 240 PCS  |
| Gross Weight                 | : 721 kg |

# S65

SAB S65 DISH  
Steel mount







| SPECIFICATIONS          | REFLECTOR  |
|-------------------------|--|
| Type                    | : Offset   |
| Offset Angle            | : 26°  |
| Reception Frequency     | : 10.70 - 12.75 GHz  |
| Antenna Gain (Ku-Band)  | : 35 dB - 37dB   |
| Material                | : Tri-cation Zinc Phosphated Steel / Aluminum                      |
| Finish Coat             | : Polyester Powder Coating   |
| Color                   | : Light Gray (RAL 7035)<br>Anthracite (RAL 7016)<br>Red (RAL 8012) |
| Small Axis Diameter     | : 60 cm  |
| Long Axis Diameter      | : 66 cm  |
| Thickness               | : 0.6 mm   |
| LNB Holder              | : 40 / 60 mm   |
| F/D                     | : 0.62   |
| Operational Temperature | : -40° + 60°   |
| Operation Wind          | : 90 km/H  |
| Survial Wind            | : 150 km/H   |
| Weight (average)        | : 1,77 kg  |

| SPECIFICATIONS                   | MOUNT  |
|----------------------------------|--|
| Type                             | : Trs 6065   |
| Material                         | : Galvanized Steel   |
| Finish Coat (Optional)           | : Polyester Powder Coating   |
| Color                            | : Light Gray (RAL 7035)<br>Anthracite (RAL 7016)<br>Red (RAL 8012) |
| Azimuth Alignment                | : 0° - 360°  |
| Elevation Alignment              | : 0° - 90°   |
| Weight (complete accesory box) : | 1,45 kg  |



|                              |          |
|------------------------------|----------|
| Pallet Quantity (Semi-Bulk): | 220 PCS  |
| Gross Weight                 | : 750 kg |

# S80

SAB S80 DISH  
Steel mount





| SPECIFICATIONS          |   | REFLECTOR  |
|-------------------------|---|--|
| Type                    | : | Offset   |
| Ofset Angle             | : | 25.60 °  |
| Reception Frequency     | : | 10.70 - 12.75 GHz  |
| Antenna Gain (Ku-Band)  | : | 37 dB - 38dB   |
| Material                | : | Tri-cation Zinc Phosphated Steel / Aluminum                      |
| Finish Coat             | : | Polyester Powder Coating   |
| Color                   | : | Light Gray (RAL 7035)<br>Anthracite (RAL 7016)<br>Red (RAL 8012) |
| Small Axis Diameter     | : | 71 cm  |
| Long Axis Diameter      | : | 79 cm  |
| Thickness               | : | 0.6 mm   |
| LNB Holder              | : | 40 / 60 mm   |
| F/D                     | : | 0.62   |
| Operational Temperature | : | -40° + 60°   |
| Operation Wind          | : | 90 km/H  |
| Survial Wind            | : | 150 km/H   |
| Weight (average)        | : | 2,67 kg  |

| SPECIFICATIONS                 |   | MOUNT  |
|--------------------------------|---|--|
| Type                           | : | Trs 80   |
| Material                       | : | Galvanized Steel   |
| Finish Coat (Optional)         | : | Polyester Powder Coating   |
| Color                          | : | Light Gray (RAL 7035)<br>Anthracite (RAL 7016)<br>Red (RAL 8012) |
| Azimuth Alignment              | : | 0° - 360°  |
| Elevation Alignment            | : | 0° - 90°   |
| Weight (complete accesory box) | : | 1,54 kg  |



|                              |         |
|------------------------------|---------|
| Pallet Quantity (Semi-Bulk): | 200 PCS |
| Gross Weight                 | 884 kg  |

# S97

SAB S97 DISH  
Steel mount





| SPECIFICATIONS          | REFLECTOR  |
|-------------------------|--|
| Type                    | : Offset   |
| Ofset Angle             | : 26.37 °  |
| Reception Frequency     | : 10.70 - 12.75 GHz  |
| Antenna Gain (Ku-Band)  | : 38,9 dB - 39,8dB   |
| Material                | : Tri-cation Zinc Phosphated Steel / Aluminum                      |
| Finish Coat             | : Polyester Powder Coating   |
| Color                   | : Light Gray (RAL 7035)<br>Anthracite (RAL 7016)<br>Red (RAL 8012) |
| Small Axis Diameter     | : 87 cm  |
| Long Axis Diameter      | : 97 cm  |
| Thickness               | : 0.7 mm   |
| LNB Holder              | : 40 / 60 mm   |
| F/D                     | : 0.62   |
| Operational Temperature | : -40° + 60°   |
| Operation Wind          | : 90 km/H  |
| Survial Wind            | : 150 km/H   |
| Weight (average)        | : 4,28 kg  |

| SPECIFICATIONS                  | MOUNT  |
|---------------------------------|--|
| Type                            | : Trs 97   |
| Material                        | : Galvanized Steel   |
| Finish Coat (Optional)          | : Polyester Powder Coating   |
| Color                           | : Light Gray (RAL 7035)<br>Anthracite (RAL 7016)<br>Red (RAL 8012) |
| Azimuth Alignment               | : 0° - 360°  |
| Elevation Alignment             | : 0° - 90°   |
| Weight (complete accessory box) | : 1,82 kg  |



|                              |          |
|------------------------------|----------|
| Pallet Quantity (Semi-Bulk): | 150 PCS  |
| Gross Weight                 | : 970 kg |

# S120

SAB S120 DISH  
Steel mount

**SAB**  
Satellite





| SPECIFICATIONS                  |   | REFLECTOR                                      |
|---------------------------------|---|--|
| Type                            | : | Offset   |
| Ofset Angle                     | : | 26 °   |
| Reception Frequency             | : | 10.70 - 12.75 GHz                              |
| Antenna Gain (Ku-Band) 11.7 GHz | : | 42,3 dB  |
| Material                        | : | Tri-cation Zinc Phosphated Steel               |
| Finish Coat                     | : | Polyester Powder Coating                       |
| Color                           | : | Anthracite (RAL-7016)<br>Light grey (RAL-7035) |
| Small Axis Diameter             | : | 106 cm (108,2)                                 |
| Long Axis Diameter              | : | 118,5 cm (120,6)                               |
| Thickness                       | : | 0,9 mm   |
| LNB Holder                      | : | 40 mm ( 60 mm optional )                       |
| F/D                             | : | 0.5  |
| Operational Temperature         | : | -40° + 60°                                     |
| Operation Wind                  | : | 90 km/H  |
| Survial Wind                    | : | 150 km/H                                       |
| Weight (average)                | : | 7,37 kg  |

| SPECIFICATIONS                 |   | MOUNT   |
|--------------------------------|---|---|
| Type                           | : | Trs 120   |
| Material                       | : | 1.20mm Galvanized Steel                           |
| Finish Coat (Optional)         | : | Polyester Powder Coating                          |
| Color                          | : | Anthracite (RAL-7016) or<br>Light Gray (RAL-7035) |
| Mast Diameter                  | : | Ø 34-60   |
| Azimuth Alignment              | : | 0° - 360°   |
| Elevation Alignment            | : | 18° - 80°   |
| Weight (complete accesory box) | : | 3,30 kg   |



|                              |           |
|------------------------------|-----------|
| Pallet Quantity (Semi-Bulk): | 100 PCS   |
| Gross Weight                 | : 1115 kg |

# Y50

SAB Y50 DISH  
Steel mount



| SPECIFICATIONS          | REFLECTOR   |
|-------------------------|---|
| Type                    | : Offset  |
| Ofset Angle             | : 26°   |
| Reception Frequency     | : 10.70 - 12.75 GHz   |
| Antenna Gain (Ku-Band)  | : 37 dB - 38dB  |
| Material                | : Tri-cation Zinc Phosphated Steel / Aluminum                   |
| Finish Coat             | : Polyester Powder Coating                                      |
| Color                   | : Light Gray (RAL 7035) Anthracite (RAL 7016)<br>Red (RAL 8012) |
| Small Axis Diameter     | : 46 cm   |
| Long Axis Diameter      | : 50 cm   |
| Thickness               | : 0.5 mm  |
| LNB Holder              | : 40 / 60 mm  |
| F/D                     | : 0.62  |
| Operational Temperature | : -40° + 60°  |
| Operation Wind          | : 90 km/H   |
| Survial Wind            | : 150 km/H  |
| Weight (average)        | : 0,99 kg   |

| SPECIFICATIONS                  | MOUNT  |
|---------------------------------|--|
| Type                            | : Y1   |
| Material                        | : Galvanized Steel   |
| Finish Coat (Optional)          | : Polyester Powder Coating                                       |
| Color                           | : Light Gray (RAL 7035), Anthracite (RAL 7016)<br>Red (RAL 8012) |
| Azimuth Alignment               | : 0° - 360°  |
| Elevation Alignment             | : 18° - 70°  |
| Weight (complete accessory box) | : 0,78 kg  |

|                              |          |
|------------------------------|----------|
| Pallet Quantity (Semi-Bulk): | 500 PCS  |
| Gross Weight                 | : 927 kg |



# M65

SAB M65 DISH  
Steel mount



| SPECIFICATIONS          | REFLECTOR  |
|-------------------------|--|
| Type                    | : Offset   |
| Offset Angle            | : 26°  |
| Reception Frequency     | : 10.70 - 12.75 GHz  |
| Antenna Gain (Ku-Band)  | : 35 dB - 37dB   |
| Material                | : Tri-cation Zinc Phosphated Steel / Aluminum                      |
| Finish Coat             | : Polyester Powder Coating   |
| Color                   | : Light Gray (RAL 7035)<br>Anthracite (RAL 7016)<br>Red (RAL 8012) |
| Small Axis Diameter     | : 60 cm  |
| Long Axis Diameter      | : 66 cm  |
| LNB Holder              | : 40 / 60 mm   |
| F/D                     | : 0.62   |
| Operational Temperature | : -40° + 60°   |
| Operation Wind          | : 90 km/H  |
| Survial Wind            | : 150 km/H   |
| Weight (average)        | : 1,55 kg  |

| SPECIFICATIONS                  | MOUNT  |
|---------------------------------|--|
| Type                            | : Trs 6080   |
| Material                        | : Galvanized Steel   |
| Finish Coat (Optional)          | : Polyester Powder Coating   |
| Color                           | : Light Gray (RAL 7035)<br>Anthracite (RAL 7016)<br>Red (RAL 8012) |
| Azimuth Alignment               | : 0° - 360°  |
| Elevation Alignment             | : 0° - 90°   |
| Weight (complete accessory box) | : 1,45 kg  |



|                              |          |
|------------------------------|----------|
| Pallet Quantity (Semi-Bulk): | 220 PCS  |
| Gross Weight                 | : 702 kg |



# 15

# M80

SAB M80 DISH  
Steel mount



| SPECIFICATIONS          |   | REFLECTOR   |
|-------------------------|---|---|
| Type                    | : | Offset  |
| Offset Angl             | : | 25.60 °   |
| Reception Frequency     | : | 10.70 - 12.75 GHz   |
| Antenna Gain (Ku-Band)  | : | 37 dB - 38dB  |
| Material                | : | Tri-cation Zinc Phosphated Steel / Aluminum                   |
| Finish Coat             | : | Polyester Powder Coating                                      |
| Color                   | : | Light Gray (RAL 7035) Anthracite (RAL 7016)<br>Red (RAL 8012) |
| Small Axis Diameter     | : | 71 cm   |
| Long Axis Diameter      | : | 79 cm   |
| LNB Holder              | : | 40 / 60 mm  |
| F/D                     | : | 0.62  |
| Operational Temperature | : | -40° + 60°  |
| Operation Wind          | : | 90 km/H   |
| Survial Wind            | : | 150 km/H  |
| Weight (average)        | : | 2,45 kg   |

| SPECIFICATIONS                 |   | MOUNT  |
|--------------------------------|---|--|
| Type                           | : | Trs 6080   |
| Material                       | : | Galvanized Steel   |
| Finish Coat (Optional)         | : | Polyester Powder Coating                                       |
| Color                          | : | Light Gray (RAL 7035), Anthracite (RAL 7016)<br>Red (RAL 8012) |
| Azimuth Alignment              | : | 0° - 360°  |
| Elevation Alignment            | : | 0° - 90°   |
| Weight (complete accesory box) | : | 1,54 kg  |



- Pallet Quantity (Semi-Bulk): 200 PCS
- Gross Weight : 840 kg



# M97

SAB M97 DISH  
Steel mount



| SPECIFICATIONS          | REFLECTOR   |
|-------------------------|---|
| Type                    | : Offset  |
| Ofset Angle             | : 26.37°  |
| Reception Frequency     | : 10.70 - 12.75 GHz   |
| Antenna Gain (Ku-Band)  | : 38,9 dB - 39,8dB  |
| Material                | : Tri-cation Zinc Phosphated Steel / Aluminum                   |
| Finish Coat             | : Polyester Powder Coating                                      |
| Color                   | : Light Gray (RAL 7035) Anthracite (RAL 7016)<br>Red (RAL 8012) |
| Small Axis Diameter     | : 87 cm   |
| Long Axis Diameter      | : 97 cm   |
| LNB Holder              | : 40 mm   |
| F/D                     | : 0.62  |
| Operational Temperature | : -40° + 60°  |
| Operation Wind          | : 90 km/H   |
| Survial Wind            | : 150 km/H  |
| Weight (average)        | : 3,88 kg   |

| SPECIFICATIONS                  | MOUNT   |
|---------------------------------|---|
| Type                            | : Trs 100   |
| Material                        | : Galvanized Steel  |
| Finish Coat (Optional)          | : Polyester Powder Coating                                      |
| Color                           | : Light Gray (RAL 7035)<br>Anthracite (RAL 7016) Red (RAL 8012) |
| Azimuth Alignment               | : 0° - 360°   |
| Elevation Alignment             | : 0° - 90°  |
| Weight (complete accessory box) | : 1,82 kg   |



|                              |          |
|------------------------------|----------|
| Pallet Quantity (Semi-Bulk): | 150 PCS  |
| Gross Weight                 | : 910 kg |

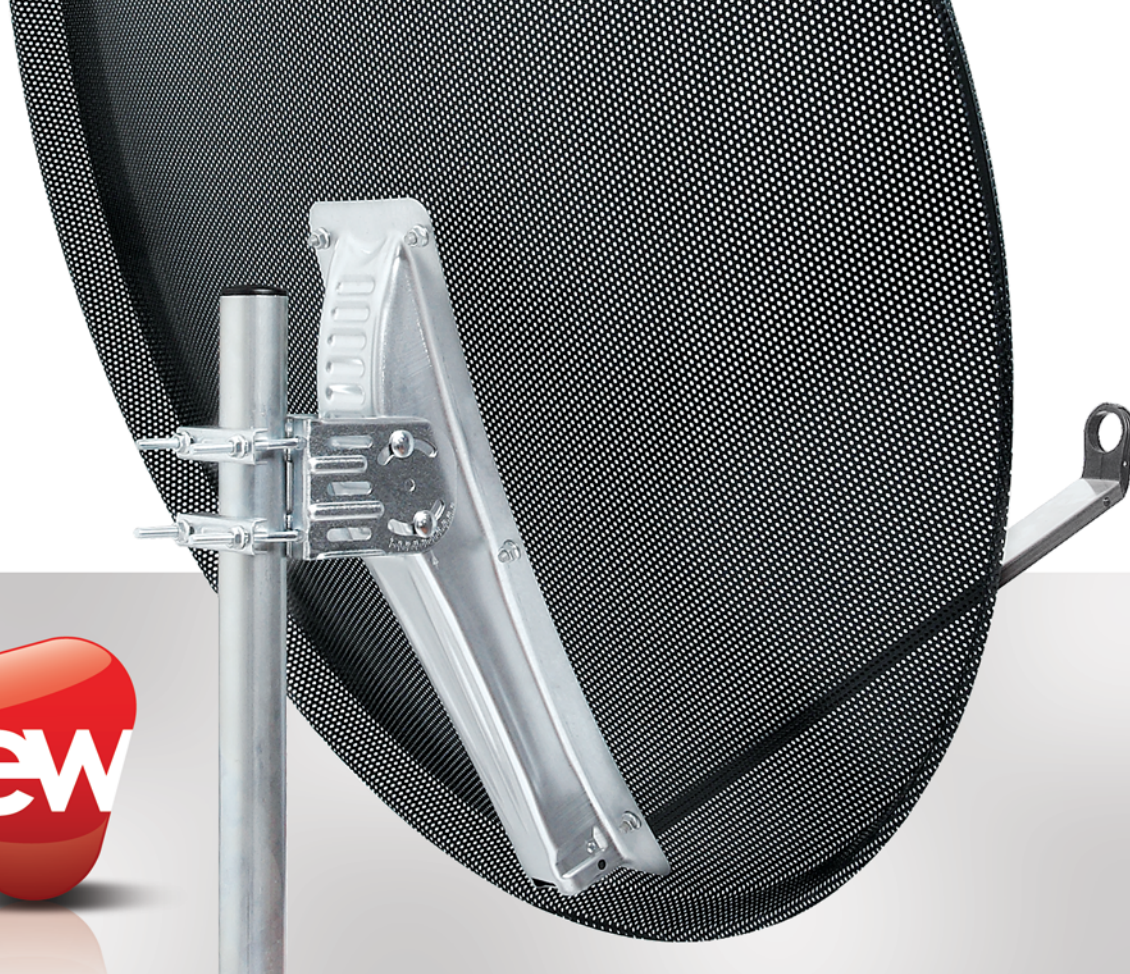


# M120

SAB M120 DISH  
Steel mount

**SAB**  
Satellite





| SPECIFICATIONS                  | REFLECTOR  |
|---------------------------------|--|
| Type                            | : Offset   |
| Offset Angle                    | : 26 °   |
| Reception Frequency             | : 10.70 - 12.75 GHz                              |
| Antenna Gain (Ku-Band) 11.7 GHz | : 42,3 dB  |
| Material                        | : Tri-cation Zinc Phosphated Steel               |
| Finish Coat                     | : Polyester Powder Coating                       |
| Color                           | : Anthracite (RAL-7016)<br>Light grey (RAL-7035) |
| Small Axis Diameter             | : 106 cm (108,2)                                 |
| Long Axis Diameter              | : 118,5 cm (120,6)                               |
| Thickness                       | : 0,9 mm   |
| LNB Holder                      | : 40 mm (60 mm optional)                         |
| F/D                             | : 0.5  |
| Operational Temperature         | : -40° + 60°                                     |
| Operation Wind                  | : 90 km/H  |
| Survial Wind                    | : 150 km/H                                       |
| Weight (average)                | : 5,70 kg  |

| SPECIFICATIONS                 | MOUNT   |
|--------------------------------|---|
| Type                           | : Trs 120   |
| Material                       | : 1.20mm Galvanized Steel                           |
| Finish Coat (Optional)         | : Polyester Powder Coating                          |
| Color                          | : Anthracite (RAL-7016) or<br>Light Gray (RAL-7035) |
| Mast Diameter                  | : Ø 34-60   |
| Azimuth Alignment              | : 0° - 360°   |
| Elevation Alignment            | : 18° - 80°   |
| Weight (complete accesory box) | : 3,30 kg   |



|                              |          |
|------------------------------|----------|
| Pallet Quantity (Semi-Bulk): | 100 PCS  |
| Gross Weight                 | : 948 kg |

# Installation Materials



## L Bracket Aluminum

|   | Article           | Material | Diameter (mm) | Height (mm) | Dist.of Wall (mm) | Plate Size Steel (mm) |           |
|---|-------------------|----------|---------------|-------------|-------------------|-----------------------|-----------|
| ■ | L Bracket 25 Alu. | L400     | Aluminum      | 50x2        | 250               | 250                   | 150x150x5 |
| ■ | L Bracket 35 Alu. | L401     | Aluminum      | 50x2        | 250               | 350                   | 150x150x5 |
| ■ | L Bracket 45 Alu. | L402     | Aluminum      | 50x2        | 250               | 450                   | 150x150x5 |



## L Bracket HQ Aluminum

|   | Article             | Material | Diameter (mm) | Height (mm) | Dist.of Wall (mm) | Plate Size Steel (mm) |           |
|---|---------------------|----------|---------------|-------------|-------------------|-----------------------|-----------|
| ■ | L Bracket 25 Alu.HQ | L400     | Aluminum      | 50x2        | 250               | 250                   | 150x150x5 |
| ■ | L Bracket 35 Alu.HQ | L401     | Aluminum      | 50x2        | 250               | 350                   | 150x150x5 |
| ■ | L Bracket 45 Alu.HQ | L402     | Aluminum      | 50x2        | 250               | 450                   | 150x150x5 |

We can produce all mechanical pieces in electro galvanised, hot dipped or aluminum.

# Installation Materials

## L Bracket Welded Steel

|                  | Article | Material | Diameter (mm) | Height (mm) | Dist.of Wall (mm) | Plate Size Steel (mm) |
|------------------|---------|----------|---------------|-------------|-------------------|-----------------------|
| L Bracket 25 WH3 | L204    | Steel    | 42x1.5        | 250         | 250               | 150x150x2.5           |
| L Bracket 35 WH4 | L205    | Steel    | 42x1.5        | 250         | 350               | 150x150x2.5           |
| L Bracket 45 WH5 | L206    | Steel    | 42x1.5        | 250         | 450               | 150x150x2.5           |
| L Bracket 55 WH6 | L207    | Steel    | 42x1.5        | 250         | 550               | 150x150x2.5           |

## L Bracket Bent Steel

|              | Article | Material | Diameter (mm) | Height (mm) | Dist.of Wall (mm) | Plate Size Steel (mm) |
|--------------|---------|----------|---------------|-------------|-------------------|-----------------------|
| L Bracket 30 | L101    | Steel    | 38x1.5        | 250         | 300               | 150x150x2.5           |
| L Bracket 40 | L102    | Steel    | 38x1.5        | 250         | 400               | 150x150x2.5           |
| L Bracket 50 | L103    | Steel    | 38x1.5        | 250         | 500               | 150x150x2.5           |

We can produce all mechanical pieces in electro galvanised, hot dipped or aluminum.

# Installation Materials

## LT Bracket

|   | Article       | Material | Diameter (mm) | Height (mm) | Dist.of Wall (mm) | Plate Size Steel (mm) |           |
|---|---------------|----------|---------------|-------------|-------------------|-----------------------|-----------|
| ■ | LT Bracket 30 | L123     | Steel         | 48x2        | 250               | 300                   | 300x270x4 |
| ■ | LT Bracket 50 | L124     | Steel         | 48x2        | 250               | 500                   | 300x270x4 |
| ■ | LT Bracket 70 | L125     | Steel         | 48x2        | 250               | 700                   | 300x270x4 |



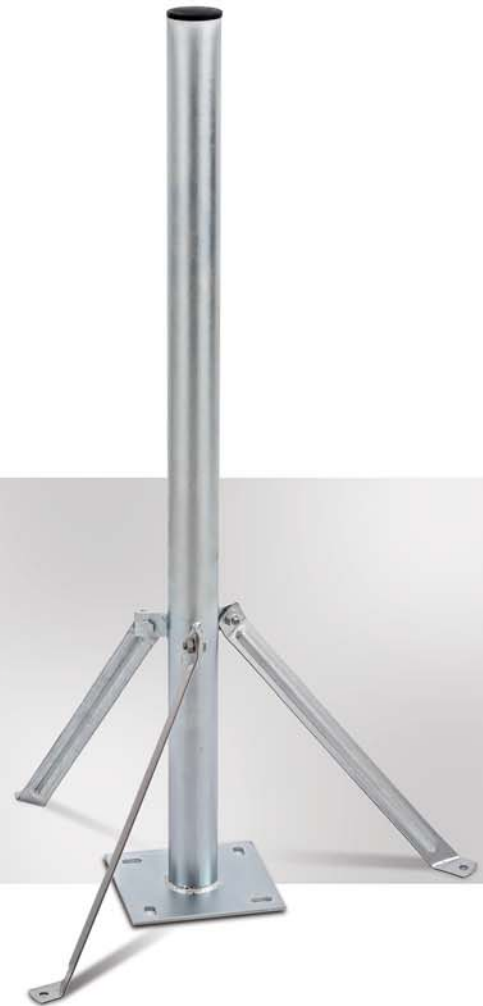
## Balcony

|   | Article | Material | Diameter (mm) | Height (mm) | Dist.of Wall (mm) | Plate Size Steel (mm) |             |
|---|---------|----------|---------------|-------------|-------------------|-----------------------|-------------|
| ■ | BH 25   | L211     | Steel         | 42x1.5      | 250               | 250                   | 150x150x2.5 |
| ■ | BH 35   | L212     | Steel         | 42x1.5      | 250               | 350                   | 150x150x2.5 |
| ■ | BH 45   | L213     | Steel         | 42x1.5      | 250               | 450                   | 150x150x2.5 |
| ■ | BH 55   | L214     | Steel         | 42x1.5      | 250               | 550                   | 150x150x2.5 |

We can produce all mechanical pieces in electro galvanised, hot dipped or aluminum.



# Installation Materials



## M Bracket

|                 | Article | Material | Height (mm) | Size (mm) |
|-----------------|---------|----------|-------------|-----------|
| M Bracket 10 cm | M106    | Steel    | 100 mm      | 30x5      |
| M Bracket 18 cm | M107    | Steel    | 180 mm      | 30x5      |
| M Bracket 28 cm | M108    | Steel    | 280 mm      | 30x5      |
| M Bracket 38 cm | M109    | Steel    | 380 mm      | 30x5      |
| M Bracket 48 cm | M110    | Steel    | 480 mm      | 30x5      |

## Bracket

|  | Article | Material | Diameter (mm) | Height (mm) | Plate Size Steel (mm) |
|--|---------|----------|---------------|-------------|-----------------------|
|  | YK15100 | Steel    | 48x2          | 1000        | 150x150               |
|  | YK1575  | Steel    | 48x2          | 750         | 150x150               |

We can produce all mechanical pieces in electro galvanised, hot dipped or aluminum.

# Installation Materials

## Balcony Bracket

| Article | Material | Diameter (mm) | Height (mm) | Plate Size (mm) |
|---------|----------|---------------|-------------|-----------------|
| L215    | Steel    | 42x1.5        | 500         | 100x100x4       |
| L216    | Steel    | 42x1.5        | 750         | 100x100x4       |
| Y1585   | Steel    | 48x1.5        | 850         | 150x150x3       |
| Y2085   | Steel    | 48x1.5        | 850         | 200x200x3       |



L215



L216



Y1585



Y2085



## LG Bracket

| Article (mm) | Material (mm) | Diameter (mm) | Height (mm) |
|--------------|---------------|---------------|-------------|
| LG001        | Steel         | 38x1.5        | 500         |
| LG002        | Steel         | 38x1.5        | 600         |
| LG003        | Steel         | 42x1.5        | 700         |

We can produce all mechanical pieces in electro galvanized, hot dipped or aluminum.



## U Bracket 25 cm

| Article (mm) | Material (mm) | Diameter (mm) | Height (mm) | Dist.of Wall (mm) |
|--------------|---------------|---------------|-------------|-------------------|
| L300         | Steel         | 38x1.5        | 250         | 300               |

## A010 Tripod

- The height is 53 cm and easy to use for complete camping set boxes.

## A009 Tripod in box

- Tripod mount.
- Fully retractable and heavy duty model.
- Tripod rotating.
- To use with dishes up to 80 cm.
- Very Stable.



## T002 Demonte Patio Mount in Box



## T001 Patio Mount



## TA001 Patio Mount Aluminum



We can produce all mechanical pieces in electro galvanised, hot dipped or aluminum.

25

# Accessories

## LNB HOLDER



**CLICK  
SYSTEM**



**A026  
Single LNB Holder**

Single Lnb holder for  
Sab dishes 40 mm



**A027  
Single LNB Holder**

Single Lnb holder for  
Sab dishes 60 mm



**CLICK  
SYSTEM**



**MFTS2  
Multiblock  
2 LNB Holder**



**MFTS3  
Multiblock  
3 LNB Holder**



**MFTS4  
Multiblock  
4 LNB Holder**

We can produce all mechanical pieces in electro galvanised, hot dipped or aluminum.



MFU2  
Multi Feed Universal  
2 LNB Holder



MFU3  
Multi Feed Universal  
3 LNB Holder



MFU4  
Multi Feed Universal  
4 LNB Holder



A024  
Universal 2 LNB Holder



A025  
Universal 3 LNB Holder

We can produce all mechanical pieces in electro galvanised, hot dipped or aluminum.

# Accessories



## Multi Feed LNB Holders MFA

Article Material

|      |       |
|------|-------|
| MFA4 | Steel |
| MFA3 | Steel |
| MFA3 | Steel |

For universal dishes



## Screw Set

- 4 pcs screw
- 4 pcs dowel
- 4 pcs washer

## Screw Set High Quality

- 4 pcs screw
- 4 pcs dowel
- 4 pcs washer

Screw set in better quality

We can produce all mechanical pieces in electro galvanised, hot dipped or aluminum.

# Accessories



**K102**  
**"U" Clips**

Material : Steel



**K103**  
**"V" Clips**

Material : Steel



**K104**  
**Balcony Clips**

Material : Steel

We can produce all mechanical pieces in electro galvanised, hot dipped or aluminum.



**SAB**  
Satellite



Sab Trading BV  
Hongkongstraat 61  
3047 BR Rotterdam  
The Netherlands  
Tel : +31 10 415 2010  
Fax : +31 10 415 7088  
www.sabsatellite.nl  
info@sabsatellite.nl



Sab Elektronik Mak. Day. Tük. Mall. San. Tic. AS  
Konya O.S.B. T. Ziyaeddin Cd.  
8. Sk. No:3 Selçuklu / Konya / Türkiye  
Tel : +90 332 239 2223  
Fax : +90 332 239 2226  
www.sab.com.tr  
info@sab.com.tr



www.kosgeb.gov.tr  
Basım : Grafist Tanıtım Hizmetleri Ltd. Şti.  
Basım Tarihi : 02.06.2014